

LCD MONITOR

MODEL PN-CD701

Dismantle Instruction

Table of contents

1. Scope.....	3
2. Tools for dismantling.....	3
3. Dismantle Procedure	3
4. Back covers	4
5. Printed circuit boards	5
6. Battery.....	6
7. LCD Module	7
8. Capacitors.....	8
9. Parts List	9

1. Scope

This document describes dismantling instruction according to Annex VII of Directive 2012/19/EU.

2. Tools for dismantling

Below tools are required to dismantle this product.

- Screw Driver
- Nipper

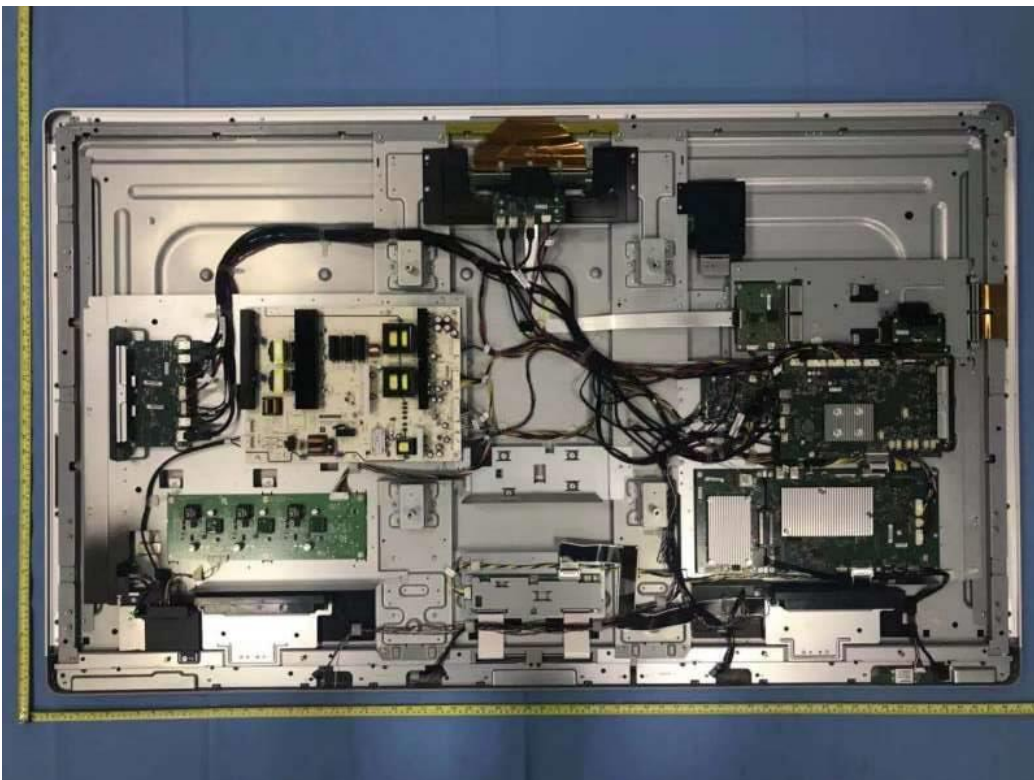
3. Dismantle Procedure

This product can be dismantled by below steps.

1. Remove Back covers (section 4)
2. Remove the shielding.
3. Remove Printed circuit boards (section 5)
4. Remove Battery (section 6)
5. Dismantle LCD (section 7)
6. Remove Electrolyte Capacitors (section 8)

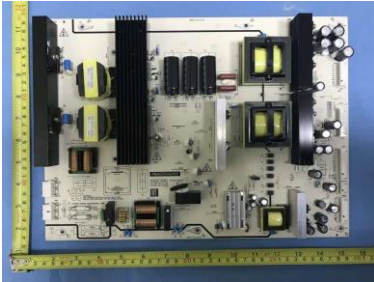
4. Back covers

2 back covers (right/left) can be removed by screw driver.



5. Printed circuit boards

All PWBs can be removed by screw driver.



Power PWB (1pcs)



LED Driver PWB (1pcs)



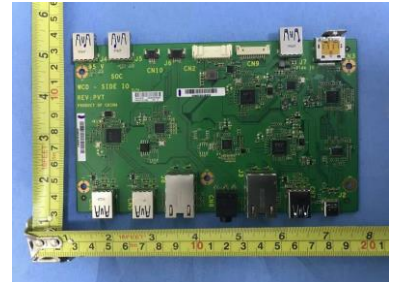
Pre scaler PWB (1pcs)



Scaler PWB (1pcs)



T-CON PWB (1pcs)



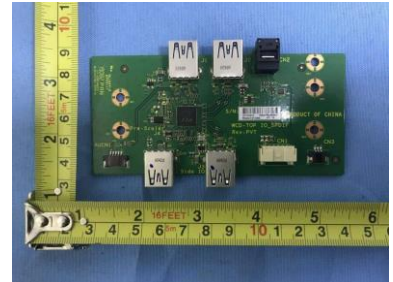
Side IO PWB (1pcs)



SOC PWB (1pcs)



Audio PWB (1pcs)



Top IO PWB (1pcs)



Service port PWB (1pcs)



Touch DBE PWB (1pcs)



Touch AFE PWB (1pcs)



Front USB PWB (1pcs)



Wi-Fi module PWB (1pcs)



Source LED PWB (4pcs)



Win button + mic-array PWB (1pcs)



Key PWB (1pcs)

6. Battery

This model uses only CR2032 Lithium Coin battery on Pre scaler PWB.

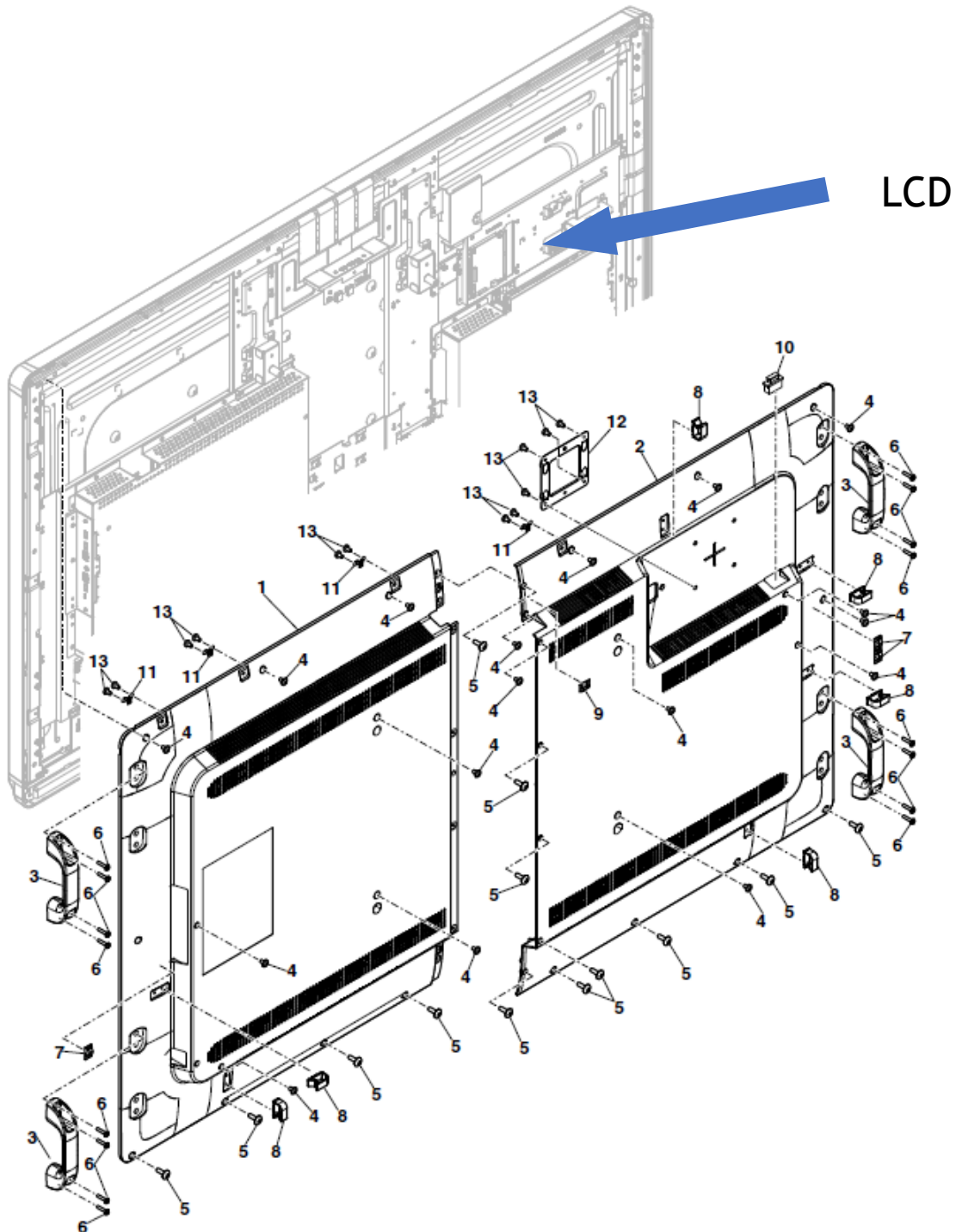
Battery CR2032 can easily be removed from the battery holder.



7. LCD Module

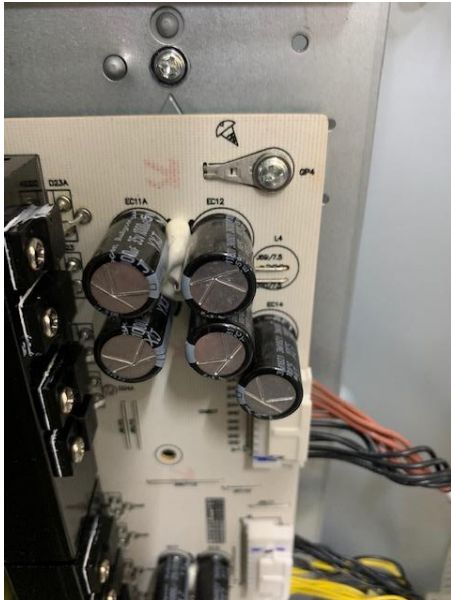
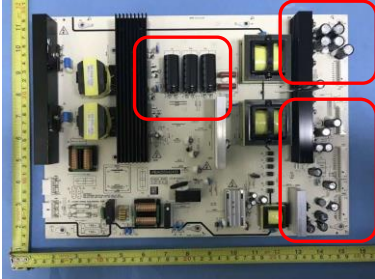
- LCD Dismantle procedure

Due to direct bonding technology the front glass cannot be removed from the LCD.
After you have removed the PWB's please take out the cables from the LCD module.



8. Capacitors

Electrolyte Capacitors which diameter/height is larger than 25mm is installed on Power PWB. These capacitors can be removed by using nipper to cut the leads.



9. Parts List

Parts described in Annex VII of directive 2012/19/EU are as below.

Parts	Note
LCD	70inch LCD module
Printed Circuit Boards	Power PWB LED driver PWB Pre scaler PWB Scaler PWB T-CON PWB Side IO PWB SOC PWB Audio PWB Top IO PWB Service port PWB Touch DBE PWB Touch AFE PWB Front USB PWB Wi-Fi module PWB Source LED PWB Win button + mic-array PWB Key PWB
Battery	Lithium Coin Battery CR2032
Electrolyte capacitors (height >25mm, diameter >25mm)	On Power PWB
External electric cables	2 kinds of Power Cord - CEE 7 (for EU) - Type-BF (for UK)